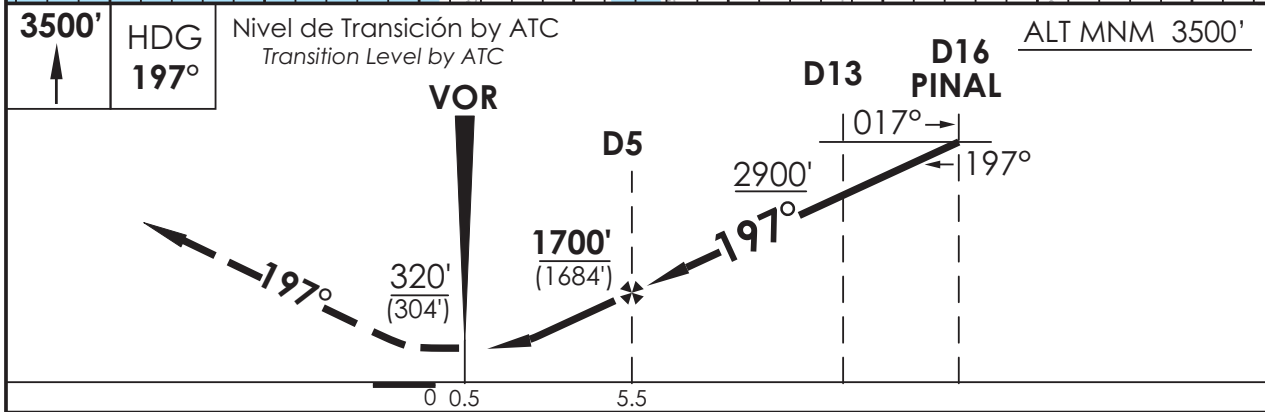


AD. CARRIEL SUR (INTL OR) CONCEPCION - CHILE

SCIE IAC 3
VOR/DME RWY 20

APP CONCEPCION Concepción Approach		120.5	TORRE CONCEPCION Concepción Tower		118.1	CONTROL TERRESTRE Ground Control		121.9
VOR CAR 114.3	FINAL APCH CRS 197°	MNM ALT D5 1700' (1684')	MDA (H) 320' (304')	AD Elev. 26'	THR 20 Elev. 16'	<div style="border: 1px solid black; border-radius: 50%; width: 100px; height: 100px; display: flex; align-items: center; justify-content: center;"> 4300 FT </div> <p>MSA 25 NM CAR</p>		
<p>APCH FRUSTRADA: Ascenso 3500' HDG 197° dentro de D15 según instrucciones ATC.</p> <p>Missed Apch: Climb to 3500' on HDG 197° within D15 according to ATC instructions.</p>								



CATEGORIA	DIRECTO RWY 20 <i>Straight in RWY 20</i>		CIRCULANDO <i>Circling</i>	ALTN <i>Alternate Minimums</i>
	MDA 320' (304')			
A	1.6 Km		540' (514)	(800') 3.2 Km
B			620' (594')	
C			680' (654)	
D			680' (654)	

Veloc. Terrestre Kts	70	90	100	120	140	160

CAMBIO: Var
Change: Var

DGAC AMDT 67

17 DICIEMBRE 2009

DASA / SECCION AIS-MAP