
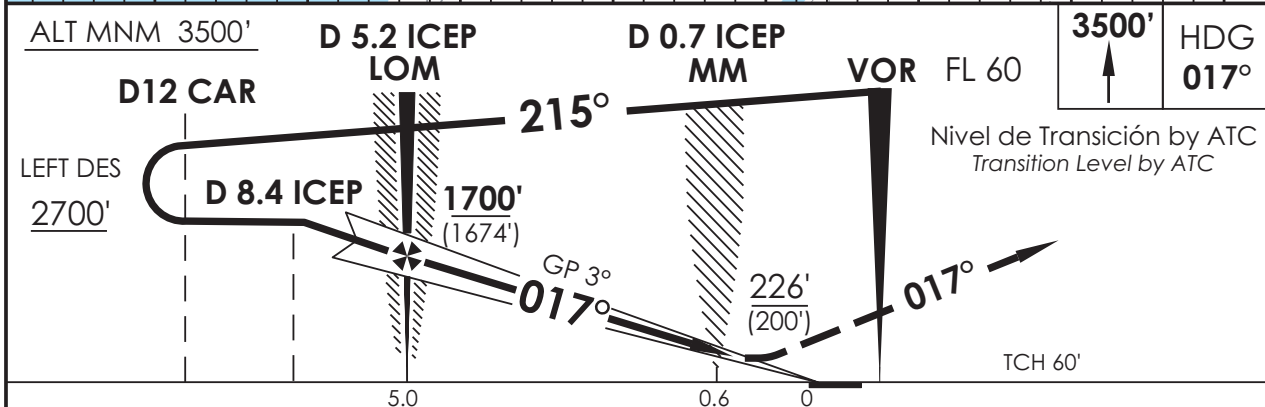


# AD. CARRIEL SUR (INTL OR) CONCEPCION - CHILE

# SCIE IAC 2 VOR/DME-ILS RWY 02

APP CONCEPCION Concepción Approach		120.5	TORRE CONCEPCION Concepción Tower		118.1	CONTROL TERRESTRE Ground Control		121.9
LOC ICEP <b>109.9</b>	FINAL APCH CRS <b>017°</b>	GS LOM <b>1700'</b> (1674')	ILS DA (H) <b>226'</b> (200')	AD Elev. <b>26'</b>	THR 02 Elev. <b>26'</b>			
APCH FRUSTRADA: Ascenso 3500' HDG 017°, luego según autorización ATC. Missed Apch: Climb to 3500' on HDG 017°, then according to ATC clearance.								



CATEGORIA	DIRECTO RWY 02 <i>Straight in RWY 02</i>				CIRCULANDO <i>Circling</i>		ALTN <i>Alternate Minimums</i>	
	ILS DA <b>226'</b> (200')		LOC WO GP MDA <b>360'</b> (334')					
	ALS	WO ALS	ALS	WO ALS				
A	RVR 550m*				540' (514)	1.6 Km	(600')	3.2 Km
B	RVR 750m	1.2 Km	0.8 Km	1.6 Km	620' (594')			
C	o				1.2 Km	1.6 Km	680' (654)	
D	0.8 Km							

\* Ver pagina GEN 2.20 / See page GEN 2.20

Veloc. Terrestre Kts	70	90	100	120	140	160
GP 3° FPM	382'	491'	545'	654'	763'	872'
MIN:SEC (FAF TO MAPt 4.4)	3:46	2:56	2:38	2:12	1:53	1:39

CAMBIO: VAR  
Change: Var

DGAC AMDT 67

17 DICIEMBRE 2009

DASA / SECCION AIS-MAP