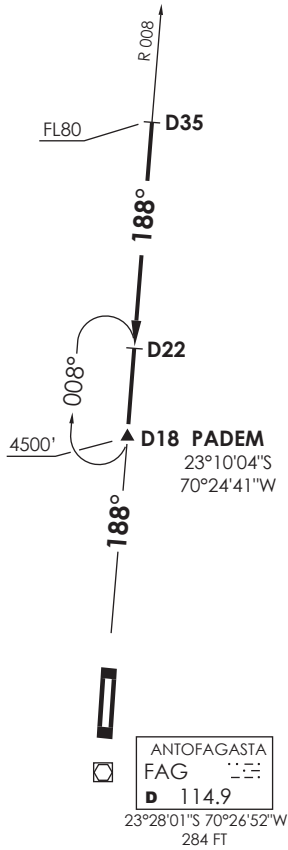


VAR 2° W 2010



**ANTOFAGASTA**

RDR 120.9 / 119.3  
 TWR 118.1

Nivel de Transición by ATC  
 Transition Level by ATC

No se ajusta a escala / Not to scale

**STAR BORO 5**

Establecido en R008 (TR188°) FAG VOR/DME, cruzar D35 N FAG FL80 o superior, cruzar PADEM INT 4500FT o superior, luego según autorización ATC.

Established on R008 (TR188°) FAG VOR/DME, cross D35 N FAG at or above FL80, cross PADEM INT at or above 4500FT, then according to ATC clearance.

DASA / SECCION AIS-MAP