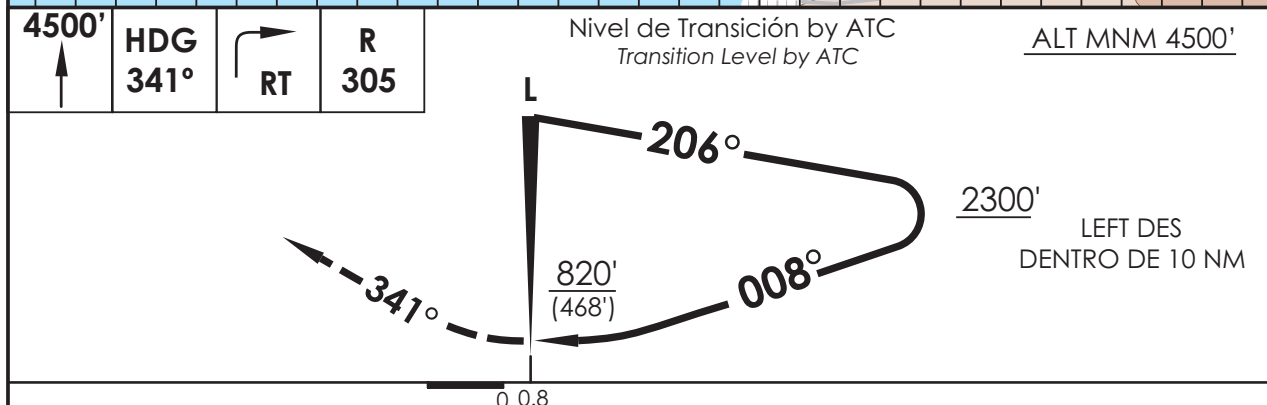
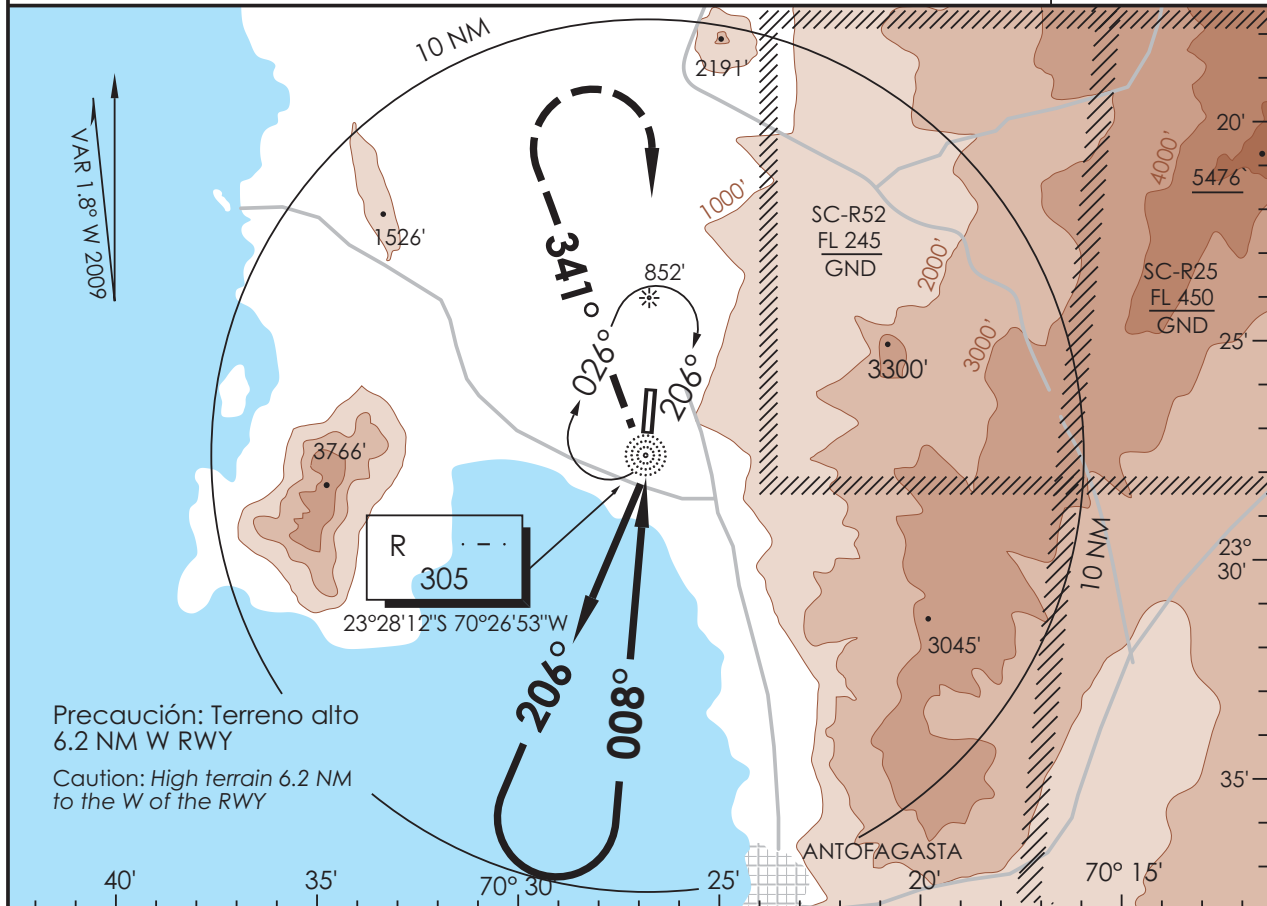


# AP. CERRO MORENO ANTOFAGASTA - CHILE

SCFA IAC 6  
NDB Rwy 01

APP ANTOFAGASTA RADAR <i>Antofagasta Approach</i> 120.9 / 119.3		TORRE ANTOFAGASTA <i>Antofagasta Tower</i> 118.1		CONTROL TERRESTRE <i>Ground Control</i> 121.9	
L "R" <b>305</b>	FINAL APCH CRS <b>008°</b>	<b>WO FAF</b>	MDA(H) <b>820'(468')</b>	AD Elev. THR 01 Elev <b>455'</b> <b>352'</b>	7200 FT MSA 25 NM R
APCH FRUSTRADA: Ascenso a 4500' HDG 341°, viraje derecha directo L "R", luego según autorización ATC. <i>Missed Apch: Climb to 4500' on HDG 341°, right turn direct to "R" L, then according to ATC clearance.</i>					



C A T E G O R I A	DIRECTO RWY 01 <i>Straight in RWY 01</i>	CIRCULANDO OESTE * <i>Circling West</i>		ALTN <i>Alternate Minimums</i>	
	MDA <b>820' (468')</b>				
A	1.6 Km	1120' (665')	1.6 Km	(800')	3.2 Km
B					
C		1300' (845')	4.0 Km	(845')	4.0 Km
D			4.4 Km		4.4 Km

\* CAT C-D NA de noche / *Cat C-D not authorized at night*

Veloc. Terrestre Kts	70	90	100	120	140	160

CAMBIO: QDM's / VIS CIRC y ALTN / VAR  
Change: QDM's / Circling and Alternate VIS / Var

DGAC AMDT 67

17 DICIEMBRE 2009

DASA / SECCION AIS-MAP