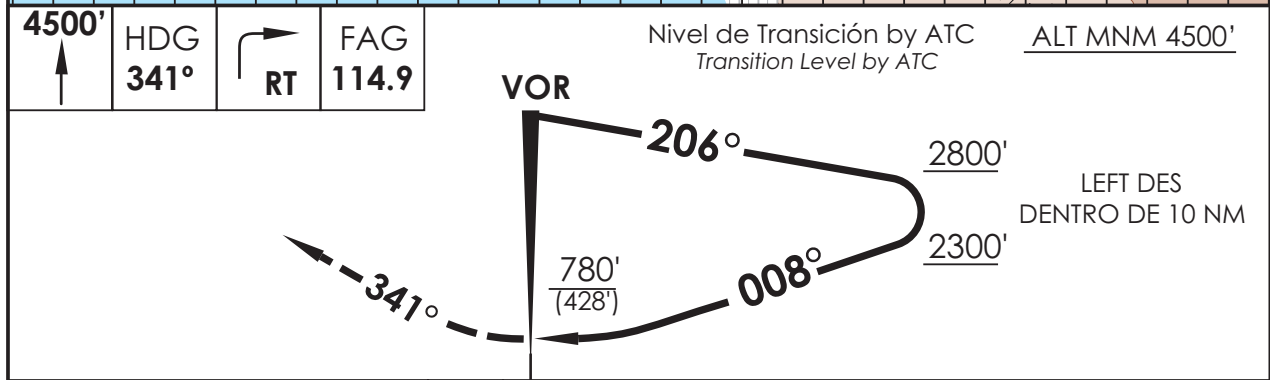
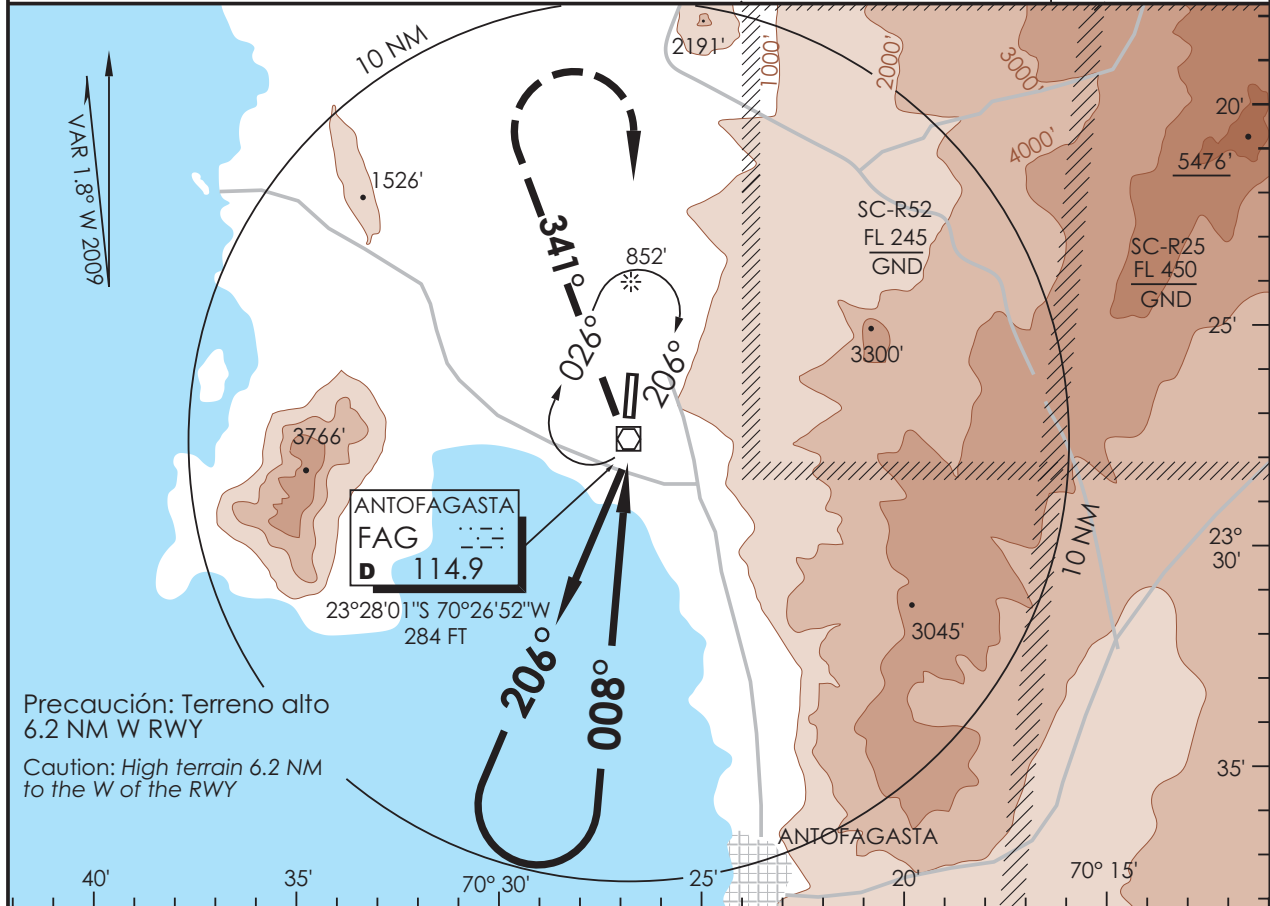


AP. CERRO MORENO ANTOFAGASTA - CHILE

SCFA IAC 5
VOR Rwy 01

| | | | | | |
|--|-------------------------------|--|-----------------------------|---|---------------|
| APP ANTOFAGASTA RADAR Antofagasta Approach 120.9 / 119.3 | | TORRE ANTOFAGASTA Antofagasta Tower 118.1 | | CONTROL TERRESTRE Ground Control 121.9 | |
| VOR FAG 114.9 | FINAL APCH CRS 008° | WO FAF | MDA(H) 780'(428') | AD Elev. THR 01 Elev 455' | 7200 FT |
| APCH FRUSTRADA: Ascenso a 4500' HDG 341°, viraje derecha directo FAG VOR, luego según autorización ATC. Missed Apch: Climb to 4500' on HDG 341°, right turn direct to FAG VOR, then according to ATC clearance. | | | | | |
| | | | | | MSA 25 NM FAG |



| | | | | | | |
|--|--|--|--------|-----------------------------------|--------|-----|
| CATEGORIA | DIRECTO RWY 01 <i>Straight in RWY 01</i> | CIRCULANDO OESTE * <i>Circling West</i> | | ALTN <i>Alternate Minimums</i> | | |
| | MDA 780' (428') | | | | | |
| A | 1.6 Km | 1120' (665') | 1.6 Km | (800') | 3.2 Km | |
| B | | | | | | |
| C | | 1300' (845') | 4.0 Km | (845') | 4.0 Km | |
| D | | | | | | |
| * CAT C-D NA de noche / <i>Cat C-D not authorized at night</i> | | | | | | |
| Veloc. Terrestre Kts | 70 | 90 | 100 | 120 | 140 | 160 |

DASA / SECCION AIS-MAP