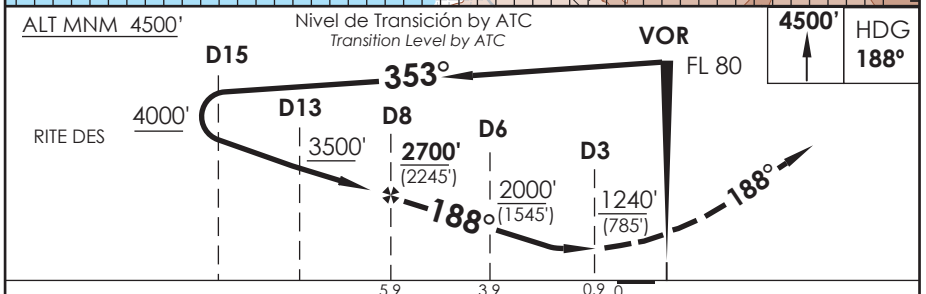
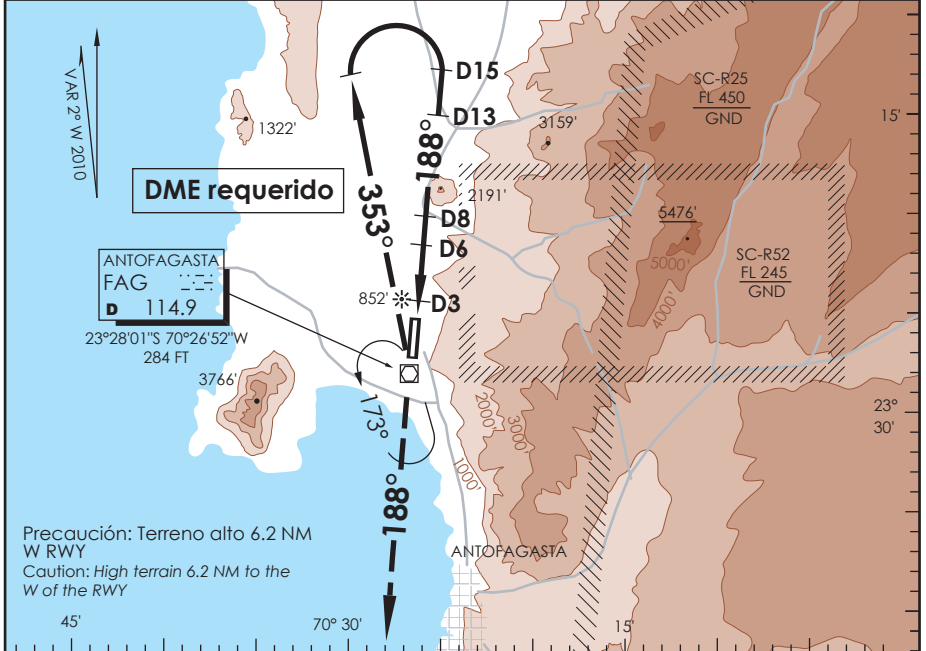


AP. CERRO MORENO ANTOFAGASTA - CHILE

SCFA IAC 2
VOR Y Rwy 19

APP ANTOFAGASTA RADAR Antofagasta Approach 120.9 / 119.3		TORRE ANTOFAGASTA Antofagasta Tower 118.1		CONTROL TERRESTRE Ground Control 121.9	
VOR FAG 114.9	FINAL APCH CRS 188°	MNM ALT D 8.0 2700' (2245')	MDA(H) 1240' (785')	AD Elev. THR 19 Elev 455'	7200 FT MSA 25 NM FAG
APCH FRUSTRADA: Ascenso a 4500' HDG 188°, luego según autorización ATC. Missed Apch: Climb to 4500' on HDG 188°, then according to ATC clearance.					



Categoría	DIRECTO RWY 19 <i>Straight in RWY 19</i>		CIRCULANDO OESTE <i>Circling West</i>		ALTN <i>Alternate Minimums</i>	
	MDA 1240' (785')					
A	1.6 Km	1240'	1.6 Km	(800')	3.2 Km	
B	2.0 Km	(785')	2.0 Km	(845')	4.0 Km	
C	3.6 Km		4.0 Km		4.4 Km	
D	4.0 Km		4.4 Km			

Veloc. Terrestre Kts	70	90	100	120	140	160
FAF to MAP± 5.0 NM	4:17	3:20	3:00	2:30	2:08	1:52

DASA / SECCION AIS-WAY