



BALMACEDA  
 BAL   
**D 115.5**

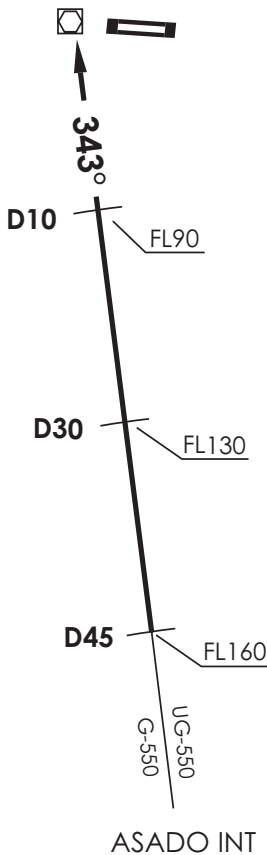
45°54'47"S 71°42'45"W  
 1719 FT

**PTO. MONTT**

RDR 128.3 / 119.7

**BALMACEDA**

TWR 118.5



Nivel de Transición by ATC  
 Transition Level by ATC

No se ajusta a escala / Not to scale

**STAR BARTY 2**

En D45 S BAL VOR/DME interceptar R163 (TR343°) a FL160 o superior, cruzar D30 S FL130 o superior, D10 S FL90 o superior, directo BAL VOR/DME 7000FT o superior, luego según autorización ATC.

At D45 S BAL VOR/DME intercept R163 (TR343°) at or above FL160, cross D30 S at or above FL130, D10 S at or above FL90 direct to BAL VOR/DME at or above 7000FT, then according to ATC clearance.

DASA / SECCION AIS-MAP