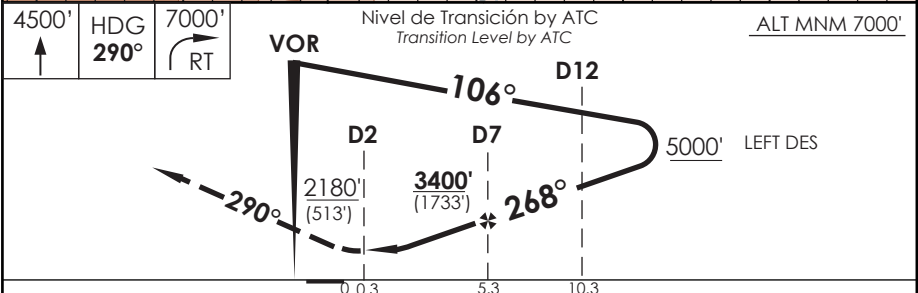
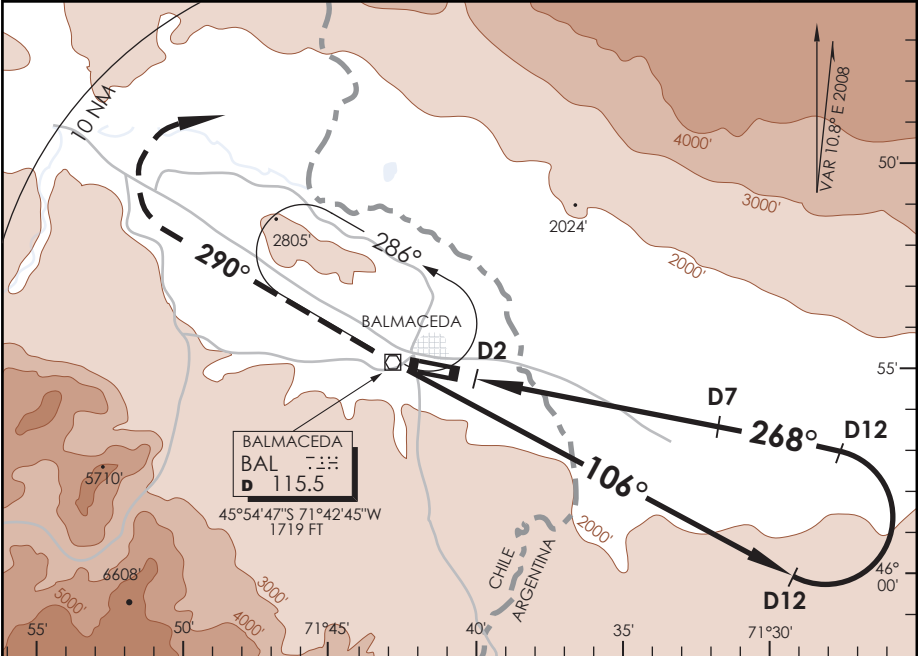


BALMACEDA - CHILE

VOR/DME Rwy 27

APP PUERTO MONTI RADAR Puerto Montt Approach		128.3 / 119.7	TORRE BALMACEDA Balmaceda Tower		118.5	CONTROL TERRESTRE Ground Control		121.9	
VOR BAL 115.5	FINAL APCH CRS 268°	MNM ALT D7 3400' (1733')	MDA(H) 2180' (513')		AD Elev THR 27 Elev 1722'	1667'			
APCH FRUSTRADA: Ascenso 4500' HDG 290° dentro de 10 NM, viraje derecha directo BAL VOR, ascenso 7000 Ft según autorización ATC. <i>Missed Apch: Climb to 4500' on HDG 290° within 10 NM, right turn direct to BAL VOR, climb to 7000' according to ATC clearance.</i>							11300 FT		
							MSA 25 NM BAL		



C A T E G O R Í A	DIRECTO Rwy 27 <i>Straight in Rwy 27</i>					C I R C U L A N D O C i r c l i n g	A L T N A l t e r n a t e M i n i m u m s		
	M D A 2180' (513')						N A	(800')	3.2 Km
	A	1.6 Km							3.6 Km
	B	2.4 Km							
D	2.8 Km								
V e l o c. T e r r e s t r e K t s		90	120	150	180	180			

DASA / SECCION ASMAP