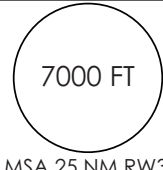
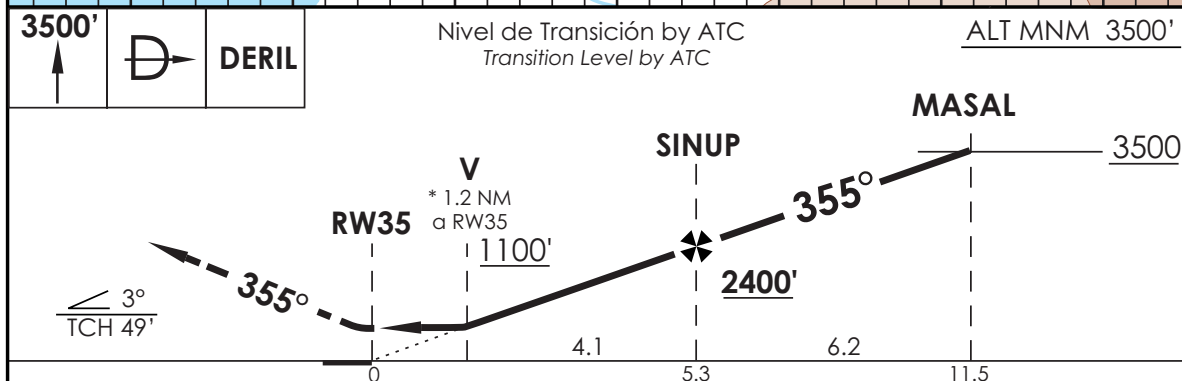
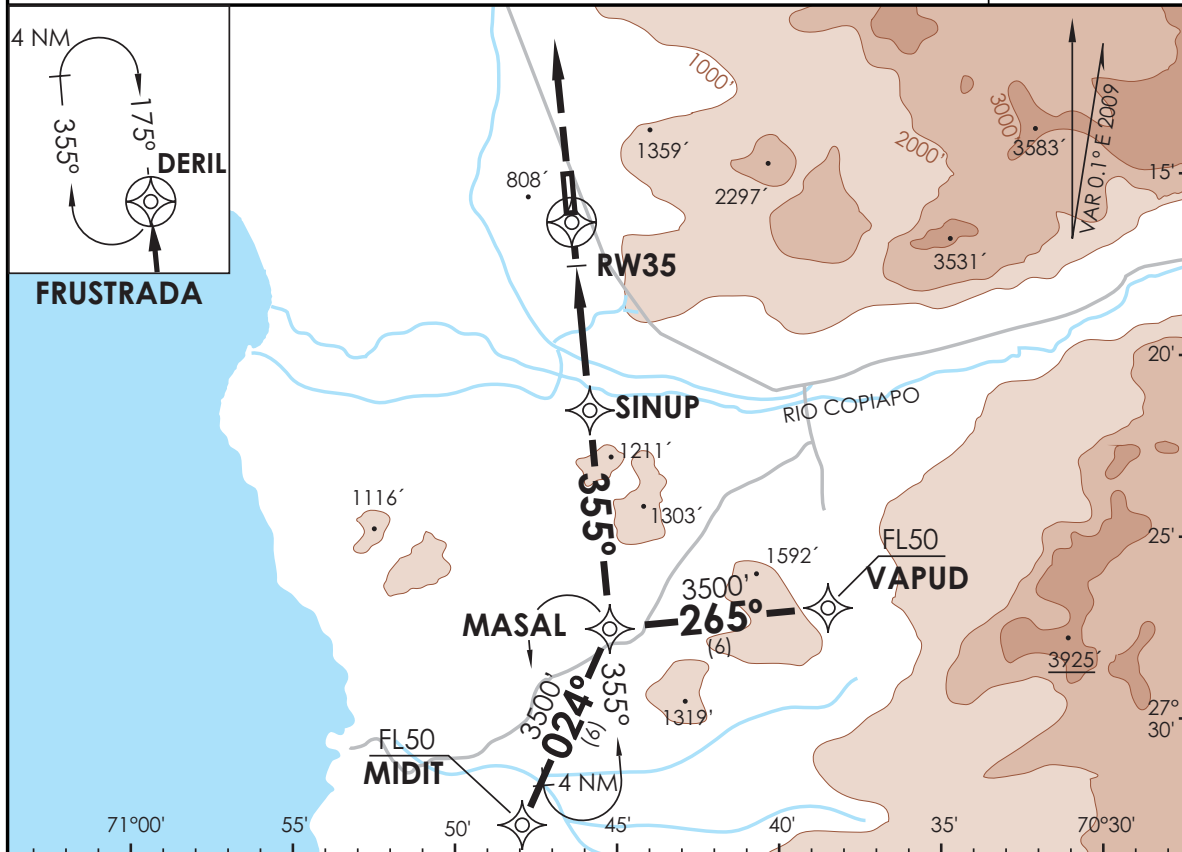


# AD DESIERTO DE ATACAMA COPIAPO - CHILE

## SCAT IAC 5 RNAV (GNSS) Rwy 35

SANTIAGO RADAR Santiago Radar	128.3	TORRE ATACAMA Atacama Tower	118.3	CONTROL TERRESTRE Ground Control	121.6
<b>RNAV</b>	FINAL APCH CRS <b>355°</b>	MNM ALT FAF35 <b>2400'(1730')</b>	MDA <b>1100'(430')</b>	AD Elev. THR 35 Elev. <b>670'</b>	 MSA 25 NM RW35
APCH FRUSTRADA: Ascenso 3500' directo a DERIL, ingrese HLDG 175° derecho o según autorización ATC. Missed Apch: Climb to 3500' direct to DERIL, enter on HLDG 175° right or according to ATC clearance.					



CATEGORÍA	DIRECTO RWY 35 <i>Straight in RWY 35</i>	CIRCULANDO OESTE Circling West	ALTN Alternate Minimums
	<b>LNAV MDA 1100' (430')</b>		
A	1.6 Km	1140' (470')	1.6 Km
B			
C		1700' (1030')	2.4 Km
D			

Requiere Vigilancia ATS ATS Surveillance required					
Veloc. Terrestre Kts	90	120	150	180	210

DASA / SECCION AIS-MAP