

AD DESIERTO DE ATACAMA COPIAPO - CHILE

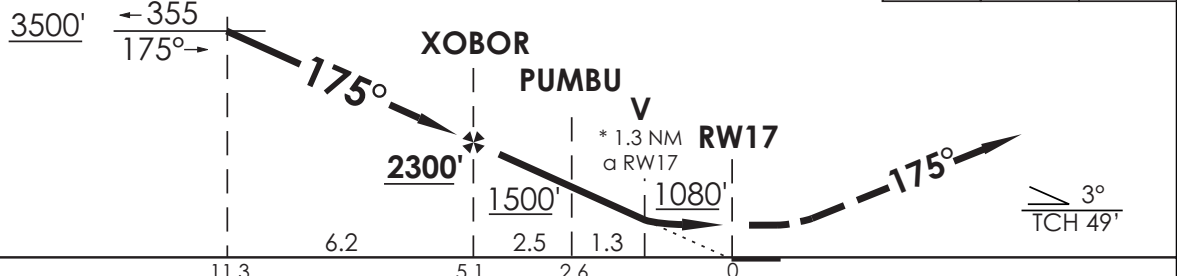
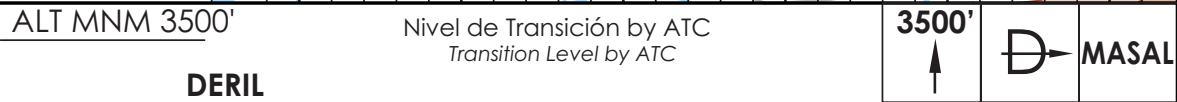
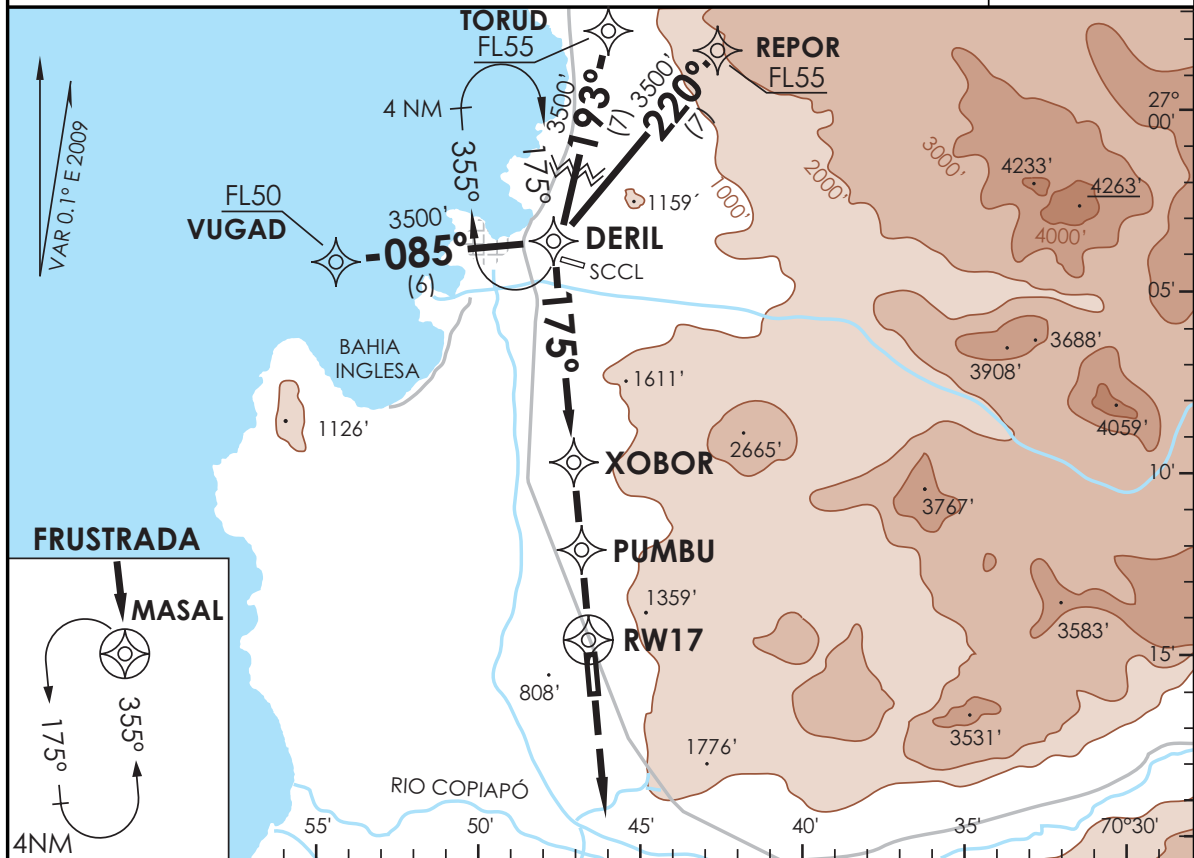
SCAT IAC 4 RNAV (GNSS) Rwy 17

SANTIAGO RADAR Santiago Radar	128.3	TORRE ATACAMA Atacama Tower	118.3	CONTROL TERRESTRE Ground Control	121.6
----------------------------------	-------	--------------------------------	-------	-------------------------------------	-------

RNAV	FINAL APCH CRS 175°	MNM ALT FAF17 2300'(1680')	MDA 1080'(460')	AD Elev. 670' THR 17 Elev. 620'	7000 FT MSA 25 NM RW17
-------------	-------------------------------	--------------------------------------	---------------------------	--	---------------------------

APCH FRUSTRADA: Ascenso 3500' directo a MASAL, ingrese HLDG 355° izquierdo o según autorización ATC.

Missed Apch: Climb to 3500' direct to MASAL, enter on HLDG 355° left or according to ATC clearance.



CATEGORÍA	DIRECTO RWY 17 <i>Straight in RWY 17</i>		CIRCULANDO OESTE Circling West	ALTN Alternate Minimums
	LNAV MDA 1080'(460')			
	ALS	WO ALS		
A	1.2 Km	1.6 Km	1220' (550')	N A
B				
C	1.6 Km	2.0 Km	2.4 Km	
D	2.0 Km	2.4 Km	3.2 Km	

Requiere Vigilancia ATS
ATS Surveillance required

Veloc. Terrestre Kts	90	120	150	180	210
----------------------	----	-----	-----	-----	-----