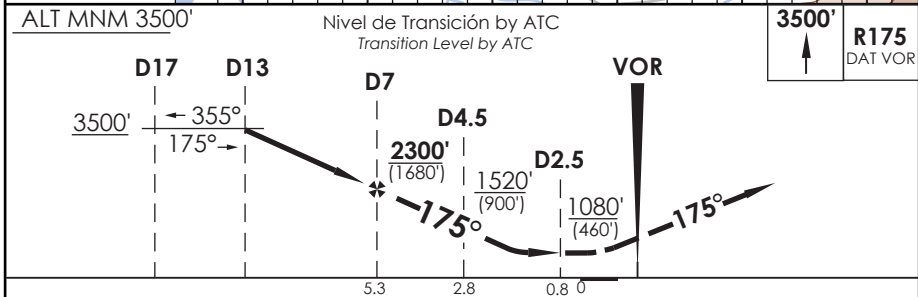
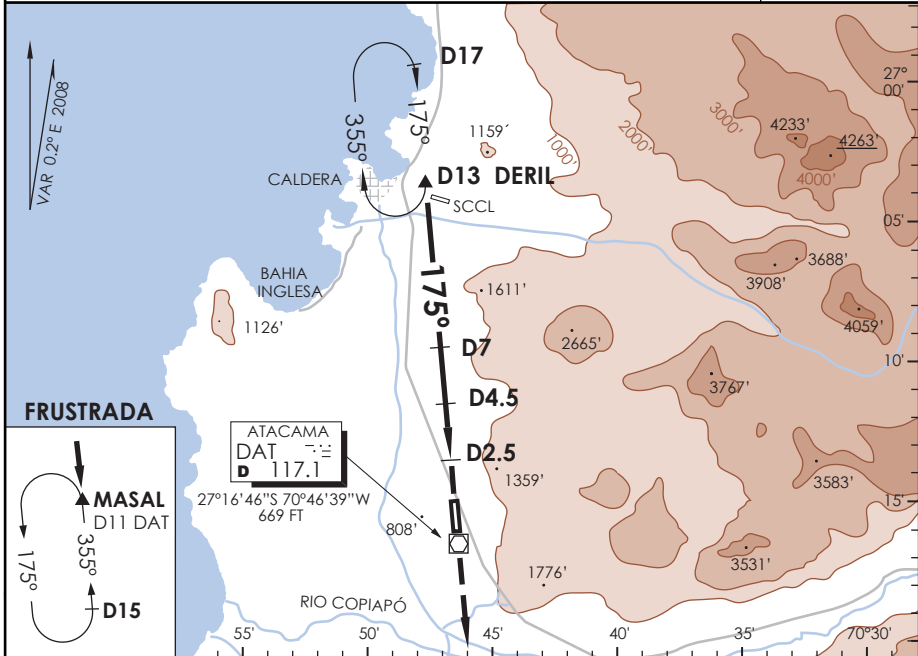


# AD. DESIERTO DE ATACAMA COPIAPO - CHILE

SCAT IAC 2  
VOR/DME Rwy 17

SANTIAGO RADAR Santiago Radar	128.3	TORRE ATACAMA Atacama Tower	118.3	CONTROL TERRESTRE Ground Control	121.6
VOR DAT <b>117.1</b>	FINAL APCH CRS <b>175°</b>	MNM ALT D 7 <b>2300' (1680')</b>	MDA <b>1080' (460')</b>	AD Elev. <b>670'</b> THR 17 Elev. <b>620'</b>	7000 FT MSA 25 NM DAT
APCH FRUSTRADA: Ascenso 3500' R175 VOR DAT, ingrese HLDG MASAL 355° izquierdo o según autorización ATC. Missed Apch: Climb to 3500' on R175 DAT VOR, enter on HLDG MASAL 355° left or according to ATC clearance.					



CIRCULO	DIRECTO RWY 17 <i>Straight in RWY 17</i>				CIRCULANDO OESTE <i>Circling West</i>	ALTN <i>Alternate Minimums</i>
	MDA <b>1080' (460')</b>					
	A	ALS	WO ALS			
B	1.2 Km	1.6 Km	1220' (550')	1.6 Km	(800') 3.2 Km	
C	1.6 Km	2.0 Km		2.4 Km		
D	2.0 Km	2.4 Km		3.2 Km		

Veloc. Terrestre Kts	90	120	150	180	210

DASA / SECCION AIS-MAP