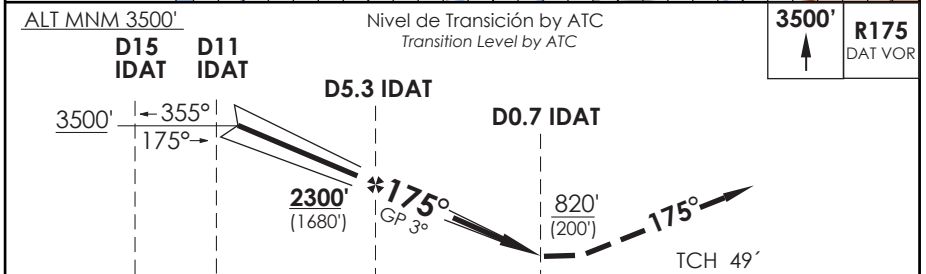
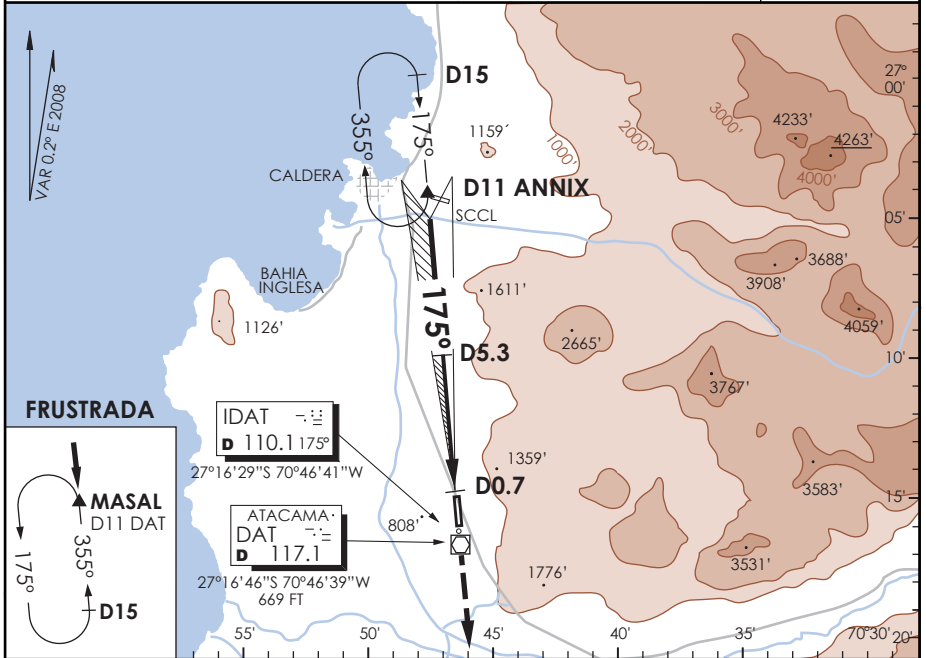


AD. DESIERTO DE ATACAMA COPIAPO - CHILE

SCAT IAC 1
ILS Rwy 17

SANTIAGO RADAR Santiago Radar		128.3	TORRE ATACAMA Atacama Tower		118.3	CONTROL TERRESTRE Ground Control		121.6
LOC IDAT 110.1	FINAL APCH CRS 175°	MNM ALT D 5.3 2300' (1680')	DA(H) 820' (200')	AD Elev. 670'	THR 17 Elev. 620'	<div style="border: 1px solid black; border-radius: 50%; width: 100px; height: 100px; display: flex; align-items: center; justify-content: center;">7000 FT</div> <p>MSA 25 NM DAT</p>		
APCH FRUSTRADA: Ascenso 3500' R175 VOR DAT, ingrese HLDG MASAL 355° izquierdo o según autorización ATC . Missed Apch: Climb to 3500' on R175 DAT VOR, enter on HLDG MASAL 355° left or according to ATC clearance.								



* WO IDAT DME PROC NA / Procedure not authorized without IDAT DME

Veloc. Terrestre Kts	90	120	150	180	210
----------------------	----	-----	-----	-----	-----