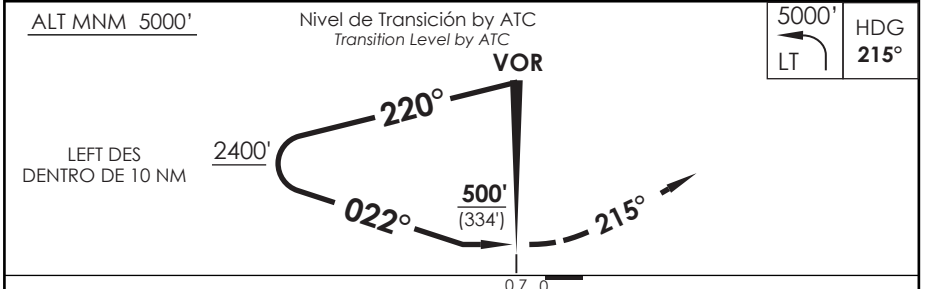
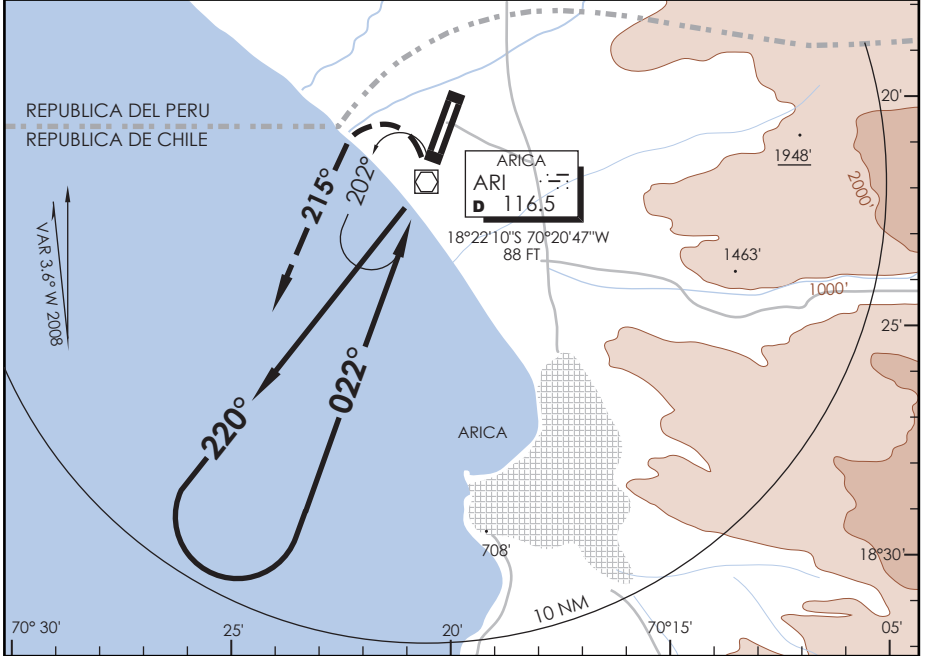


AP. CHACALLUTA
ARICA - CHILE

SCAR IAC 2
VOR Rwy 02

APP ARICA Arica Approach 119.9		TORRE ARICA Arica Tower 118.5		CONTROL TERRESTRE Ground Control 121.9	
VOR ARI 116.5	FINAL APCH CRS 022°	WO FAF	MDA (H) 500' (334')	AD Elev 166' THR 02 Elev 123'	11000 FT MSA 25 NM ARI
APCH FRUSTRADA: Viraje izquierda HDG 215° en ascenso para 5000', luego viraje izquierda directo ARI VOR e ingreso HLDG 022° izquierdo. Missed Apch: Left turn HDG 215° climbing to 5000', then left turn direct to ARI VOR and enter on HLDG 022° left.					



C A B C D	DIRECTO RWY 02 Straight in RWY 02	CIRCULANDO ESTE Circling East	ALTN Alternate Minimums			
	MDA 500' (334')		(800')	3.2 Km		
	1.6 Km	760' (594')	1.6 Km	3.6 Km		
		860' (694')	2.8 Km			
Veloc. Terrestre Kts	70	90	100	120	140	160

DASA / SECCION AIG-MAP